

ESTERNI



CLASSTILE IS A TRADEMARK OF GALILEO SRL  
Via dei Prati, 23 - 41043 Ubersetto di Formigine (MO) Italy  
Tel. +39 059 7473703 - Fax +39 059 7473707  
[www.classtile.it](http://www.classtile.it) - [info@egalileo.it](mailto:info@egalileo.it)



# ESTERNI

Outdoors  
Aussenbereich  
Extérieur

	CALCAREA Beige. Grigio. Cotto	PIETRA VENATA Taupe. Grigio. Grafite	TERRE TOSCANE Sabbiaio. Beige. Rosso
15,1x30,6   6"x12"			*
16,5X33   6,5"x13"	*	*	
÷ 8 mm	*	*	
÷ 8,5 mm			*
R 10 A+B	*		
R 11		*	*
STRUCTURE	*	*	*



# CALCAREA





Calcareo Grigio 16,5x33 | 6,5\"/>



Calcareo Grigio 16,5x33 | 6,5\"/>





Calcarea Beige 16,5x33 | 6,5"x 13"





Calcarea Beige 16,5x33 | 6,5"x 13"



Calcarea Cotto 16,5x33 | 6,5"x 13"







# CALCAREA FORMATO . SIZE . FORMAT

Comply with UNI EN 14411 All. G Bla Group | Conforme UNI EN 14411 All. G Gruppo Bla | Erfüllt UNI EN 14411 All. G Gruppe Bla | Classification Uni En 14411 All. G Bla Group



**CECAL016001\_BEIGE**  
16,5X33 - 6,5"x13"

5



**CECAL016002\_GRIGIO**  
16,5X33 - 6,5"x13"

5



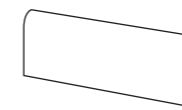
**CECAL016003\_COTTO**  
16,5X33 - 6,5"x13"

5

## SVILUPPO GRAFICO . SVILUPPO GRAFICO

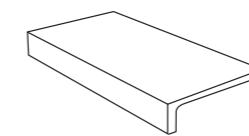
16,5x33 - 6"x13" PZ - PSC 28

## PEZZI SPECIALI . SPECIAL TRIMS . FORMSTÜCKE . PIÈCES SPECIALES



**Battiscopa**  
8x33 | 3"x13"

30



**Elle monolitico**  
15x30 | 6"x12"

36

Available in all colors . Disponibile in tutti i colori .  
Verfügbar in allen Farben . Disponible dans tous les coloris

## IMBALLI . PACKING . VERPACKUNG . EMBALLAGE

Formato Size   Format	Spessore Thickness	Pz / Box Stk. / Ktn	Mq / Box Qm / Ktn	Kg / Box Kg / Ktn	Box / Pal Ktn / Pal	Mq / Pal QM / Pal	Kg / Pal Kg / Pal
16,5x33   6,5"x13"	8	25	1,36	22,5	60	81,6	1350
<b>Battiscopa</b> 8x33   3"x13"	8	30	-	13,00	48	-	650
<b>Elle monolitico</b> 15x30   6"x12"	9,2	8	-	10,00	44	-	440







# PIETRA VENATA





Pietra Venata Taupe 16,5x33 | 6,5"x 13"



Pietra Venata Grigio 16,5x33 | 6,5"x 13"





Pietra Venata Grigio 16,5x33 | 6,5"x 13"





Pietra Venata Grafite 16,5x33 | 6,5"x 13"



Pietra Venata Grafite 16,5x33 | 6,5"x 13"



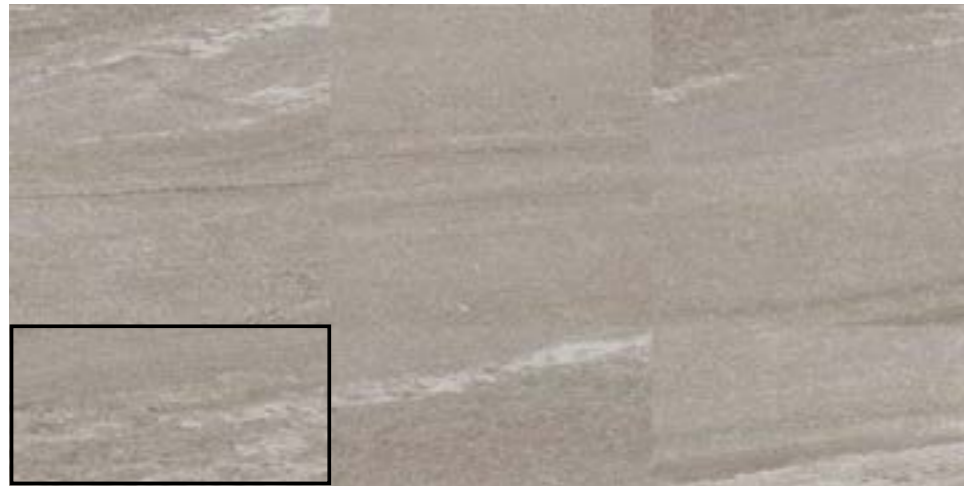


Pietra Venata Grafite 16,5x33 | 6,5"x 13"



# PIETRA VENATA FORMATO . SIZE . FORMAT

Comply with UNI EN 14411 All. G Bla Group | Conforme UNI EN 14411 All. G Gruppo Bla | Erfüllt UNI EN 14411 All. G Gruppe Bla | Classification Uni En 14411 All. G Bla Group



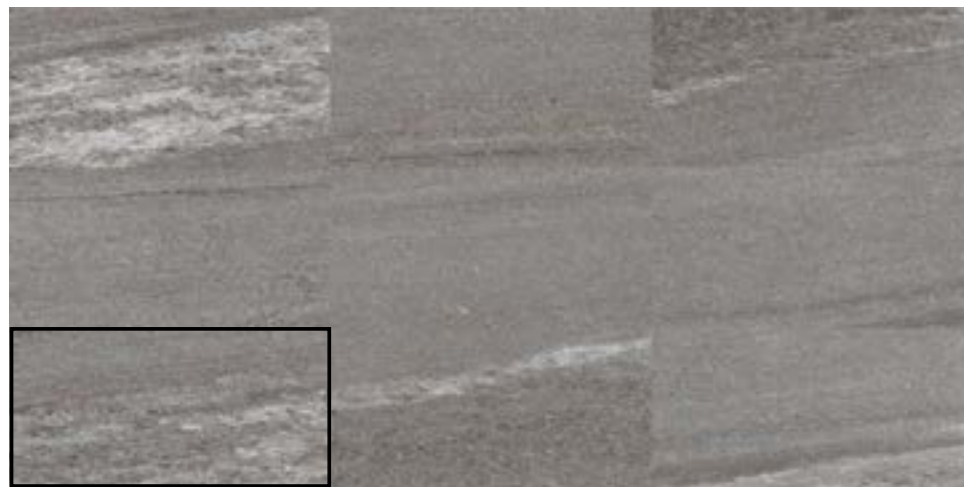
**CEPIE016001\_TAUPE**  
16,5X33 - 6"x13"

5



**CEPIE016002\_GRIGIO**  
16,5X33 - 6"x13"

5



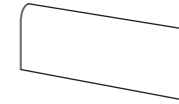
**CEPIE016003\_GRAFITE**  
16,5X33 - 6"x13"

5

## SVILUPPO GRAFICO . SVILUPPO GRAFICO

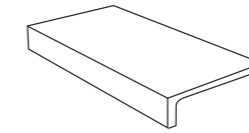
16,5x33 - 6"x13" PZ - PSC 28

## PEZZI SPECIALI . SPECIAL TRIMS . FORMSTÜCKE . PIÈCES SPECIALES



**Battiscopa**  
8x33 | 3"x13"

30



**Elle monolitico**  
15x30 | 6"x12"

36

Available in all colors . Disponibile in tutti i colori .  
Verfügbar in allen Farben . Disponible dans tous les coloris

## IMBALLI . PACKING . VERPACKUNG . EMBALLAGE

Formato Size   Format	Spessore Thickness	Pz / Box Stk. / Ktn	Mq / Box Qm / Ktn	Kg / Box Kg / Ktn	Box / Pal Ktn / Pal	Mq / Pal QM / Pal	Kg / Pal Kg / Pal
16,5x33   6,5"x13"	8	25	1,36	22,5	60	81,6	1350
<b>Battiscopa</b> 8x33   3"x13"	8	30	-	13,00	48	-	650
<b>Elle monolitico</b> 15x30   6"x12"	9,2	8	-	10,00	44	-	440







# TERRE TOSCANE





Terre Toscane Beige 15,1x30,6 | 6"x12"



Terre Toscane Rosso 15,1x30,6 | 6"x12"







# TERRE TOSCANE FORMATO . SIZE . FORMAT

Comply with UNI EN 14411 All. G Bla Group | Conforme UNI EN 14411 All. G Gruppo Bla | Erfüllt UNI EN 14411 All. G Gruppe Bla | Classification Uni En 14411 All. G Bla Group



**CETERO15009\_SABBIATO**  
15,1x30,6 - 6"x12"

1



**CETERO15008\_BEIGE**  
15,1x30,6 - 6"x12"

1



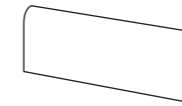
**CETERO15007\_ROSSO**  
15,1x30,6 - 6"x12"

1

## SVILUPPO GRAFICO . SVILUPPO GRAFICO

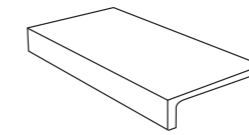
15,1x30,6 - 6"x12" PZ - PSC 24

## PEZZI SPECIALI . SPECIAL TRIMS . FORMSTÜCKE . PIÈCES SPECIALES



**Battiscopa**  
7x30 | 2,8"x12"

30



**Elle monolitico**  
15x30 | 6"x12"

29

Available in all colors . Disponibile in tutti i colori .  
Verfügbar in allen Farben . Disponible dans tous les coloris

## IMBALLI . PACKING . VERPACKUNG . EMBALLAGE

Formato Size   Format	Spessore Thickness	Pz / Box Stk. / Ktn	Mq / Box Qm / Ktn	Kg / Box Kg / Ktn	Box / Pal Ktn / Pal	Mq / Pal QM / Pal	Kg / Pal Kg / Pal
15,1x30,6   6"x12"	8,5	32	1,48	25,3	60	88,8	1540
<b>Battiscopa</b> 7x30   2,8"x12"	8,5	30	-	11,00	48	-	550
<b>Elle monolitico</b> 15x30   6"x12"	9,2	8	-	10,00	44	-	440





## CARATTERISTICHE TECNICHE

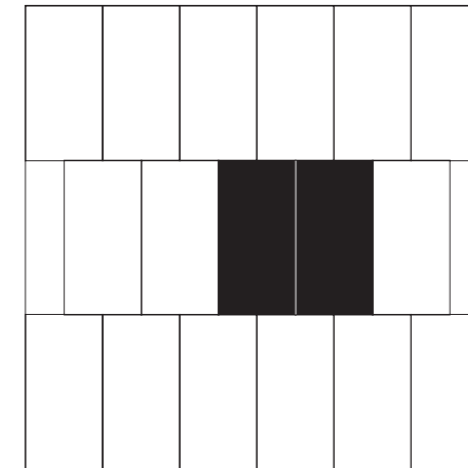
TECHNICAL FEATURES . TECHNISCHE DATEN . CARACTÉRISTIQUES TECHNIQUES

GRES PORCELLANATO SMALTATO . GLAZED PORCELAIN STONEWARE . FEINSTEINZEUG GLASIERT GRÈS CERAME EMAILLÉ

Technical features Caratteristiche tecniche Technische Daten Caractéristiques techniques	Norm Norma Norm Norme	Values required by the norms Valore prescritto dalle norme Normvorschriften Werte Valeur Prescrite	Galileo value Valore Galileo Galileo Werte Valeur Galileo
Comply with UNI EN 14411 All. G Bla Group   Conforme UNI EN 14411 All. G Gruppo Bla   In Übereinstimmung mit UNI EN 14411 Anhang G Gruppe Bla   Classification selon Uni En 14411 All. G Bla Group			
Sizes Dimensioni Abmessungen Dimensions	ISO 10545-2	Lunghezza e larghezza/ Lenght and width/ Länge und Breite / Longueur et largeur $\pm 0,6\%$ Spessore/ thickness/ Stärke / Epaisseur $\pm 5\%$ Rettilineità spigoli/ linearity/ Kantengeradheit / Rectitude des aretes $\pm 0,5\%$ Ortogonalità/ Orthogonality/ Rechtwinkligkeit/ Orthogonalité $\pm 0,6\%$ Planarità/ Flatness/ Ebenflächigkeit / Planéité $\pm 0,5\%$	Conforme Anforderungen erfüllt In accordance
Water absorption Assorbimento d'acqua Wasseraufnahme Absorption d'eau	ISO 10545-3	$\leq 0,5\%$	Conforme Anforderungen erfüllt In accordance
Breaking strenght Resistenza alla flessione Biegefestigkeit Résistance à la flexion	ISO 10545-4	35N/mm <sup>2</sup>	Conforme Anforderungen erfüllt In accordance
Resistance to acid Resistenza agli acidi Säurebeständigkeit Résistance aux produits chimique	ISO 10545-13	Classe GB min. GLB min. GHB min. Class GB min. GLB min. GHB min. Klasse GB min. GLB min. GHB min	Conforme Anforderungen erfüllt In accordance
Resistance against abrasion (PEI) Resistenza all'abrasione (PEI) Abriebfestigkeit (PEI) Résistance à l'abrasion (PEI)	ISO 10545-7	Abrasion class from I to V Classi di abrasione da I a V Abriebklassen I bis V	Conforme Anforderungen erfüllt In accordance
Frost resistance Resistenza al gelo Frostbeständigkeit Résistance au gel	ISO 10545-12	Frost proof Resiste / Beständig / Non gélives	Conforme Anforderungen erfüllt In accordance
Static coefficient of friction Coefficiente d'attrito (scivolosità) Rutschhemmung (Schlüpfrigkeit) Résistance au Glissement	DIN 51130	$\geq R9$	Terre toscane <b>R11</b> Pietra venata <b>R11</b> Calcarea <b>R10 A+B</b>
Mohs surface hardness Durezza superficie Mohs Ritzhärte nach Mohs Dureté surface Mohs	UNI EN 101	$\geq 5$	Conforme / Anforderungen erfüllt / In accordance
Crazing to staining Resistenza alle macchie Fleckenbeständigkeit Resistance aux taches	ISO 10545-14	$\geq 3$	Conforme Anforderungen erfüllt In accordance
Resistance to temperature changes Resistenza agli sbalzi termici Temperatur-Wechselbesändigkeit Résistance aux variations thermiques	ISO 10545-9	-	Conforme Anforderungen erfüllt In accordance
Coeficente di dilatazione termica lineare Coefficient of linear thermal expansion Wärmeausdehnungskoeffizient Coef cient de dilatation thermique lineaire	ISO 10545-8	$\alpha \leq 7 \times 10^{-6} / ^\circ\text{C}$	Conforme Anforderungen erfüllt In accordance

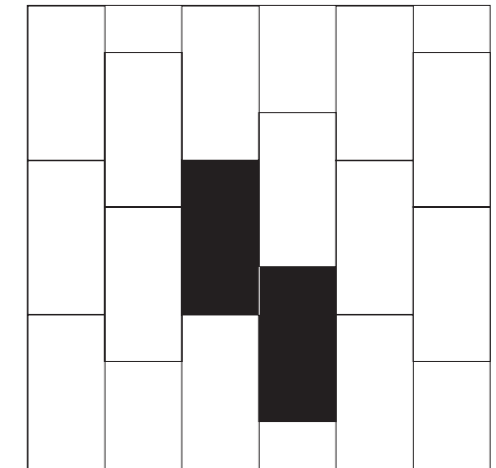
## CONSIGLI DI POSA

LAYING SOLUTIONS . VERLEGEBEISPIELE . PROPOSITIONS POUR LA POSE



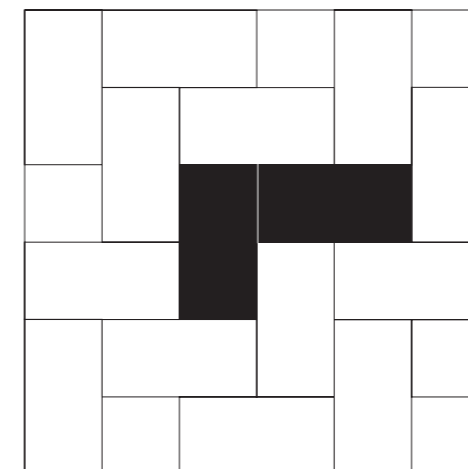
### Size

16,5x33 cm - 6,5"x13"  
15,1x30,6 - 6"x12"



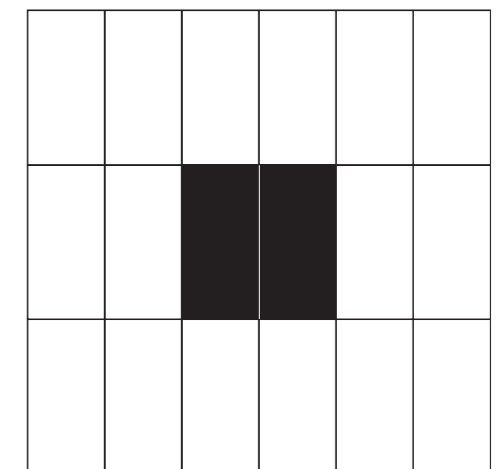
### Size

16,5x33 cm - 6,5"x13"  
15,1x30,6 - 6"x12"



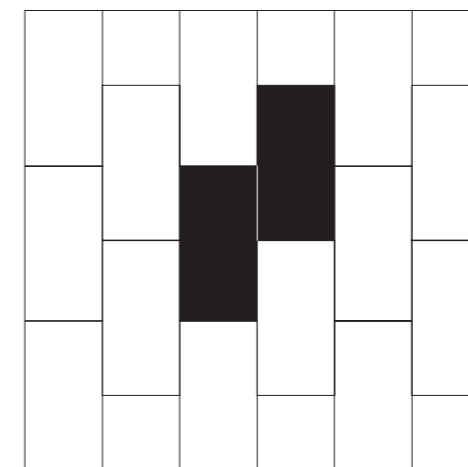
### Size

16,5x33 cm - 6,5"x13"  
15,1x30,6 - 6"x12"



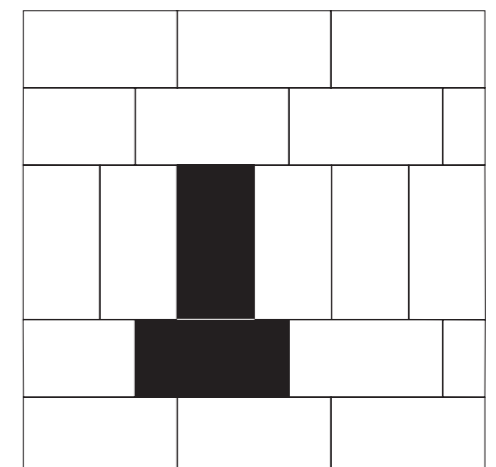
### Size

16,5x33 cm - 6,5"x13"  
15,1x30,6 - 6"x12"



### Size

16,5x33 cm - 6,5"x13"  
15,1x30,6 - 6"x12"



### Size

16,5x33 cm - 6,5"x13"  
15,1x30,6 - 6"x12"



**I colori e le caratteristiche estetiche dei prodotti sono quanto più possibile vicini a quelli reali, nei limiti consentiti dai processi di stampa.**

**Le tabelle con i dati riferiti ai contenuti per scatole ed ai pesi degli imballi sono aggiornate al momento della stampa del catalogo, pertanto i dati elencati possono subire variazioni.**

The colours and appearance features of the products are as close as possible to reality, within the limitation of the printing process.

The tables with the data referred to the content per box and to the packing weight are updated at the catalogue printing time; therefore the listed data can be altered.

Die farben und ästhetischen eigenschaften der producte entsprechen der wirklichkeit, innerhalb den dem druckverfahren erlaubten grenzen.

Die in den Tabellen enthaltenen Daten in Bezug auf den Inhalt pro Karton und das Gewicht der jeweiligen Verpackung werden am Ausgabedatum des Katalogs richtig gestellt. Jeweilige Veränderungen entsprechender Daten sind somit vorbehalten.

Les couleurs et les caractéristique esthétiques sont fidèles aux couleurs et caractéristique réelles dans les limites des procédés d'impression.

Les tableaux avec les donn.es concernant les contenus par colis et les poids des emballage sont mis . jour au moment o. le catalogue est imprim., c'est pourquoi ces donn.es peuvent subir des variations.